

Cell Image Analysis System

CELLAVISION[®] DM1200

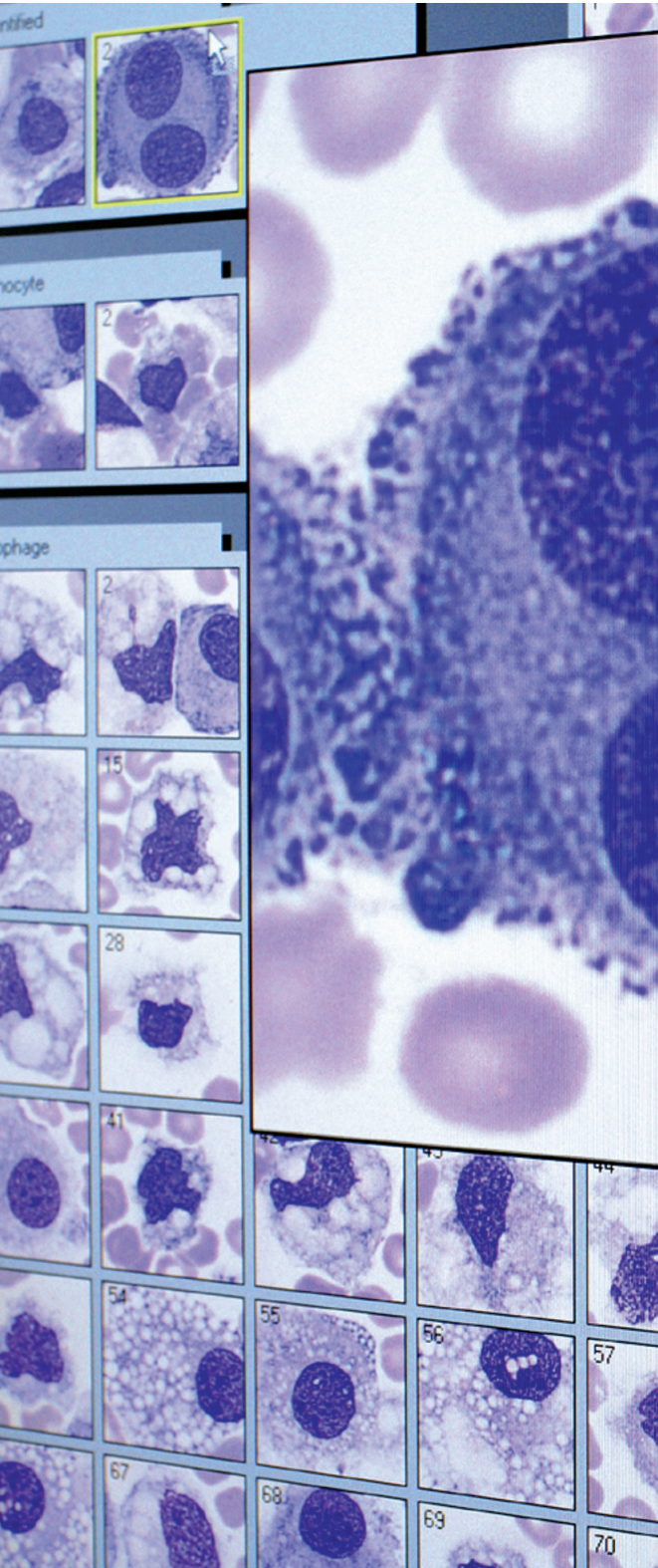
Designed for the
mid-volume lab



System overview

CellaVision DM1200 can easily become a part of any hematology workflow.

The DM1200 is a digital imaging device which analyzes cells from a stained slide, providing a WBC pre-classification differential as well as WBC, RBC and PLT morphology pre-characterization. The system automates the search for cells which allows the technologists more time to focus on abnormal morphology. This system enables laboratories to standardize the cell and morphology nomenclature, leading to consistency of cell differential result reporting and better patient outcomes.



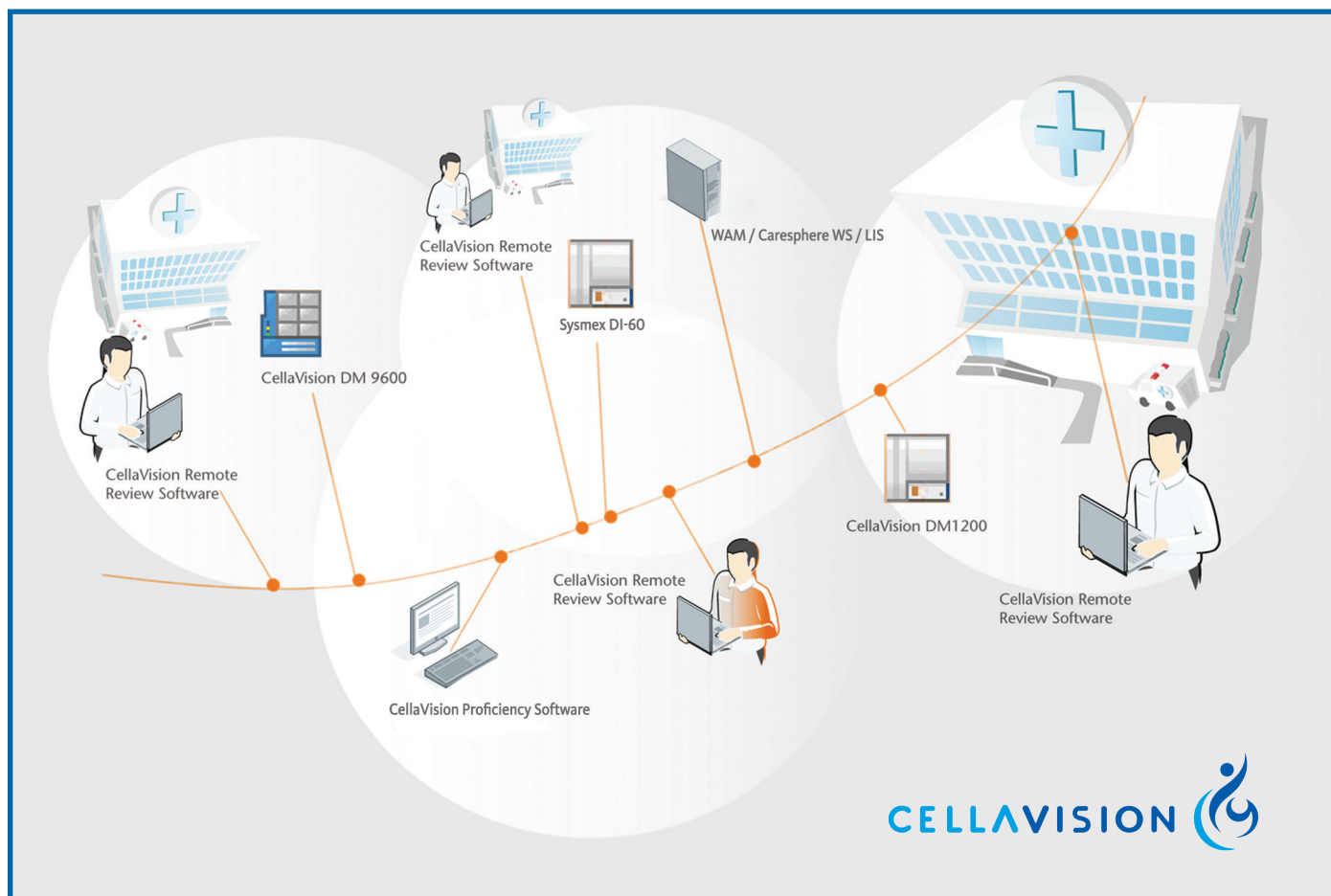
Efficiency, proficiency & collaboration

The CellaVision DM1200 offers a high degree of automation, allowing for an escalating workload without increasing labor. This technology delivers improved ergonomics when compared to using a microscope.

Key benefits:

- Automatically locates and presents images of cells on blood smears
 - Differential count of white blood cells.
 - Characterization of red blood cell morphology and platelet estimation.
- Automates workflow
 - Reduces the time consumed on smear review, allowing technologists more opportunity for other tasks.
 - Streamlines collaboration with medical services to provide pertinent diagnostic information.
- Enables training and morphological standardization
 - Enhances training/cross-training for staff throughout the laboratory by utilizing large, customizable, on-board reference libraries and optional proficiency software.
- Scans a predefined part of a microscope slide
 - Allows for discussion between clinicians regardless of physical location.
 - Regions of interest on the slide can be tagged and comments can be added. Images and comments can be exported to presentations and educational materials.

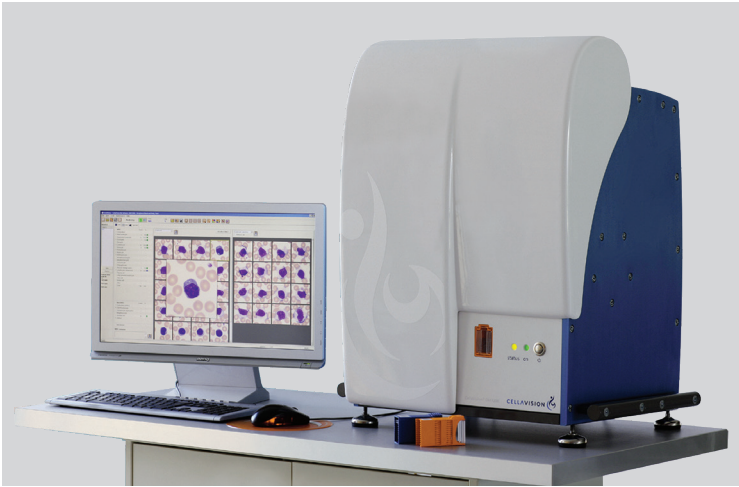
Share results anywhere



The CellaVision DM1200 can share a database with other CellaVision DM and Sysmex DI-60 analyzers installed at the same facility or a remote location. This allows integrated delivery networks to flexibly utilize remote staffing and expertise for both morphological and pathological reviews.

The DM1200 supports bi-directional interface communication, which reduces the potential for transcription errors and streamlines the reporting of results.

Efficiency, proficiency, collaboration



DM1200 efficiency and proficiency

The DM1200 can reduce the time spent performing differentials or training new technologists. With the optional Proficiency Testing Software, managers can set up cases to test and document the competency of their staff.

DM1200 offers a high degree of automation

- Optimized Workload Management
- Reduced Eye Strain
- On-going Education
- Competency Assessment



DM1200 collaboration

Functional Review Stations enable supervisory review, inter/intra lab comparison, pathology consultation, and real time collaboration with clinicians through network integration.

Facilitate Collaboration with Clinicians

- Provides pertinent clinical information
- Enables remote consultaion
- Tags specific areas of slides to enable sharing

Specifications

PERFORMANCE SPECIFICATIONS

Slide Preparation Method (wedge)	Automated slide maker and stainer HemaPrep®/MiniPrep® blood smearing device Manual smears
Stains	Romanowsky stains (May Grünwald Giesma, Wright-Giesma, Wright)
Number of Cells Counted	User definable (Default: 100)
Slide Handling	Requires barcode labeled slides with clipped/round corners <ul style="list-style-type: none"> Slides are loaded into a magazine with the capacity of 12 slides
Slide Capacity	On-board capacity of 12 slides
Slide Image Size	100 WBC's: ~ 5MB 100 WBC + RBC: ~ 6MB 100 WBC + RBC + PLT: ~ 6MB
Digital Slides	Up to 20 slides/hr for 10mm x 10mm at 10x Up to 2 slides/hr for 10mm x 10mm at 50x
Immersion Oil	CellaVision Oil Pack, 150ml each, enough for approximately 3000 slides
Quality Control	Cell location accuracy test for the verification of the hardware and stain quality
Archiving of Results and Images	Supported media: CD-R/CD-RW and LAN
Storage Capacity	Primary storage: on local hard drive up to 4,000 slides (20 GB) <ul style="list-style-type: none"> Secondary storage: unlimited when transferred to external storage media

INSTRUMENT SPECIFICATIONS

Printer Support	Laser/inkjet printers supported by Windows® 10
Communications	Bi-directional LIS support, ASTM <ul style="list-style-type: none"> Ethernet 10/100 Mbps Multiple CellaVision DM analyzers can share a database
System Components	Sliding scanner unit <ul style="list-style-type: none"> CellaVision® DM Software PC with Windows 10
Electronic Specifications	Slide Scanning Unit: 1A/2A <ul style="list-style-type: none"> Voltage input 230/115 VAC Current input: System computer: 3A/6A
Size (W x D x H)	576 X 450 X 710mm 22.7 X 17.7 X 28.0 inches
Weight	80 kg/176 lbs
Throughput	Peripheral Blood <ul style="list-style-type: none"> Up to 20 slides/hour for complete differential (100 WBC+RBC+PLT)
Accessories	Barcode labeled slide magazines Immersion oil packs QC barcode labels
Supported Optional Software	<ul style="list-style-type: none"> Proficiency Software CellaVision Advanced RBC Body Fluid Server Software Remote Review Software

Sysmex Corporation

1-5-1-Wakinohama-Kaigandori Chuo-ku, Kobe 651-0073, Japan · Phone +81 78 265-0521 · www.sysmex.co.jp

Sysmex America, Inc.

577 Aptakisic Road, Lincolnshire, IL 60069, U.S.A. · Phone +1 800 379-7639 · www.sysmex.com/us

Sysmex Canada, Inc.

5700 Explorer Drive Suite 200, Mississauga, ON L4W0C6 Canada · Phone +1 905 366-7900 · www.sysmex.ca

Sysmex Latin America and the Caribbean

Rua Joaquim Nabuco 615 · Bairro Cidade Jardim, São José dos Pinhais Paraná – Brasil – CEP 83040-210 · Phone +55 41 2104-1314 · www.sysmex.com.br