

Cell Image Analysis System

CELLAVISION[®] DM9600

Enhancing productivity,
streamlining collaboration



CELLAVISION DM9600

Automation of the manual differential

Thanks to a unique combination of high speed, reliable slide movement robotics, patented auto-focus algorithms and state of the art Artificial Neural Network technology, CellaVision DM analyzers provide new ways of handling the manual differential traditionally performed on a microscope, significantly reducing time and resources for routine hematology testing. By automating the manual differential, increased speed and reduced turnaround time are offered together with quality enhancement.

Efficiency | Proficiency | Connectivity | Collaboration

Automatic cell location and pre-classification improves resource utilization, the quality of results and employee satisfaction. Highly skilled medical technologists are able to spend more time on difficult cases that require careful analysis and assessment. The ability to archive images enables laboratories and clinicians to review previous cell images for long term case management.

Efficiency

Automatic cell location and pre-classification, along with unique cell views, reduce the time spent performing differentials, training new techs and monitoring proficiency.

Proficiency

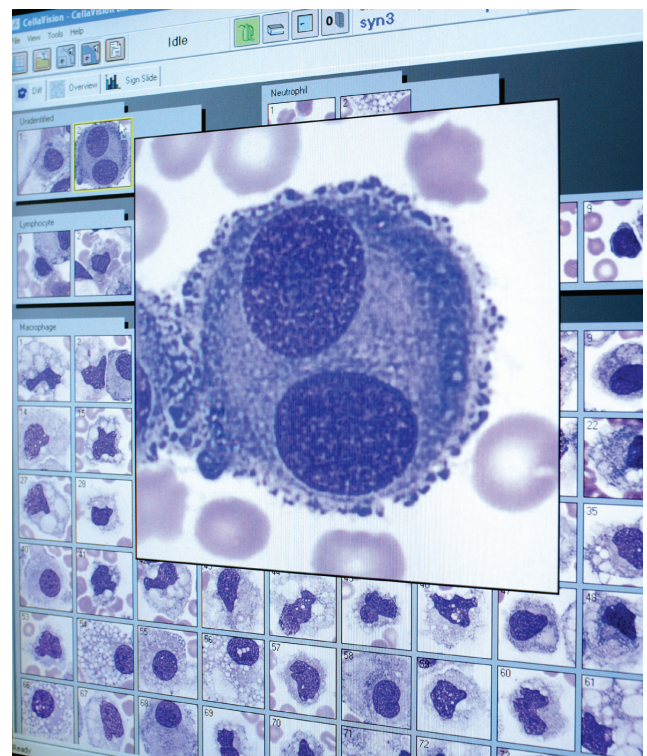
CellaVision DM9600 helps all technologists perform differentials at the same high level of consistency. The system provides traceability of results at the individual cell level.

Connectivity

Multiple Remote Review Stations enable supervisory review, inter/intra-lab comparison and the opportunity for real-time collaboration with pathology.

Collaboration

As a result of network integration, the CellaVision DM9600 will provide new value to clinicians, saving them time with remote, real-time access to a patient's image history.



Images of pre-classified cells can be magnified for detailed analysis

CELLAVISION DM9600

Product information

The CellaVision DM analyzers fill one of the missing pieces in the hematology laboratory's goal for automation in routine testing.

KEY FEATURES

- Analyzes blood smears and body fluids
- Allows digital slide creation
- Automated workflow
- Continuous feed with a loading capacity of 96 slides
- View cell counter results and flags

TECHNICAL SPECIFICATIONS

Slide preparation methods (wedged)	Automated slide maker and stainers	System Components	Slide Scanning Unit
	HemaPrep®/MiniPrep® blood smearing device		CellaVision® DM Software
	Manual smears	Electrical Specifications	PC with Windows® 10
	Standard cyto-centrifuge preparation for body fluids (optional)		Voltage input: 230/115 VAC Current input: 4A/8A
Stains	May Grünwald Giemsa, Wright Giemsa, Wright	Size (w x d x h)	22.8" x 22" x 31.1"
		Weight	205 lbs
Quality Control	Cell location accuracy test for the verification of the hardware and stain quality	Communications	Bi-directional LIS support, ASTM
			Ethernet 10/100 Mbps
Archiving of Results and Images	Supported media: CD-R/CD-RW and LAN		Multiple CellaVision DM analyzers can share a database
			E-mail
Storage Capacity	Primary storage:	OPTIONAL SOFTWARE/ APPLICATIONS	CellaVision Remote Review Software
	On local hard drive up to 4,000 slides (20 GB)		CellaVision Proficiency Software
	Secondary storage:		CellaVision Body Fluid Application
	Unlimited when transferred to external storage media		
THROUGHPUT			
Peripheral Blood	Up to 30 slides/hour for complete differential (100 WBC+RBC+PLT)		
Digital Slides	Up to 20 slides/hour for 10 x 10 mm in 10x		
	Up to 1.5 slides/hour for 10 x 10 mm in 10x + 50x		



Sysmex Corporation

1-5-1-Wakino-hama-Kaigandori Chuo-ku, Kobe 651-0073, Japan · Phone +81 78 265-0521 · www.sysmex.co.jp

Sysmex America, Inc.

577 Aptakisic Road, Lincolnshire, IL 60069, U.S.A. · Phone +1 800 379-7639 · www.sysmex.com/us

Sysmex Canada, Inc.

5700 Explorer Drive Suite 200, Mississauga, ON L4W0C6 Canada · Phone +1 905 366-7900 · www.sysmex.ca

Sysmex Latin America and the Caribbean

Rua Joaquim Nabuco 615 - Bairro Cidade Jardim, São José dos Pinhais Paraná – Brasil – CEP 83040-210 · Phone +55 41 2104-1314 · www.sysmex.com.br