

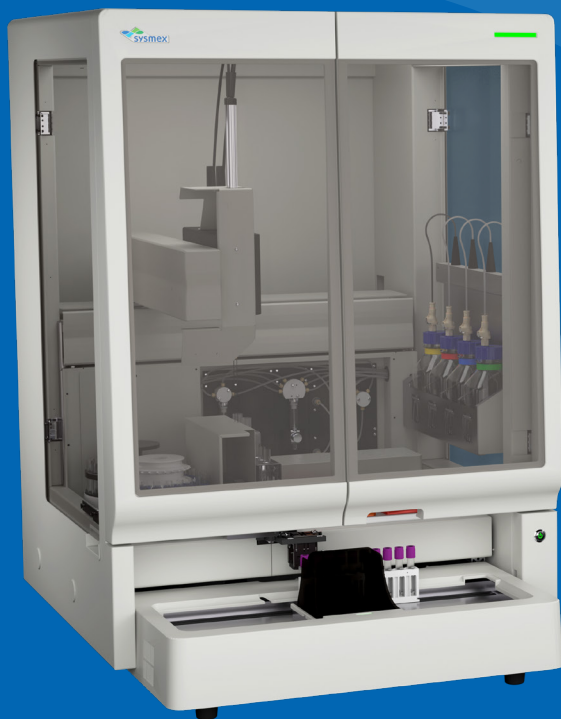
# Sysmex Clinical Flow Cytometry Solution

The complete solution  
for Canadian clinical flow  
cytometry labs



Together for a better  
healthcare journey

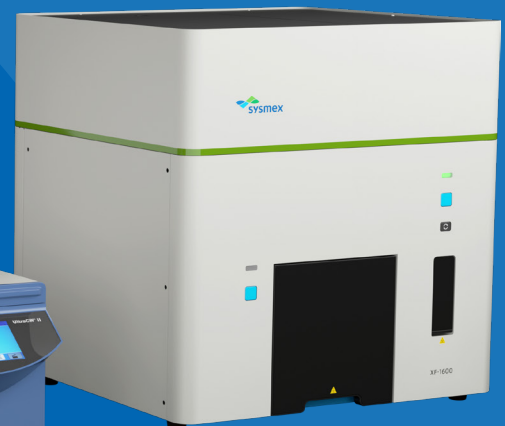
# Ready. Set. FLOW.



**PS-10™ Sample  
Preparation System**



**Helmer UltraCW®II  
Automatic Cell  
Washing System**



**XF-1600™  
Flow Cytometer**

Sysmex, a global leader in hematology, urinalysis and hemostasis and a provider of trusted automated workflow solutions, now offers scientists a unique and innovative complete clinical flow cytometry solution.

Get your samples **READY** with the fully automated PS-10™ Sample Preparation System. Then, get **SET** with the compatible Helmer UltraCW®II Automatic Cell Washing System that includes easily transferrable rotors. And **FLOW** with the reliable XF-1600™ Flow Cytometer. Plus, you can create custom panels with Sysmex's portfolio of high-quality antibodies for dependable results and reporting. This complete clinical flow cytometry solution offers robust data collection with seamless integration.

For research applications VenturiOne® Flow Cytometry Analysis Software is also available.

*Not all products and applications are available in all markets. Contact your Sysmex Sales Representative for further information.*

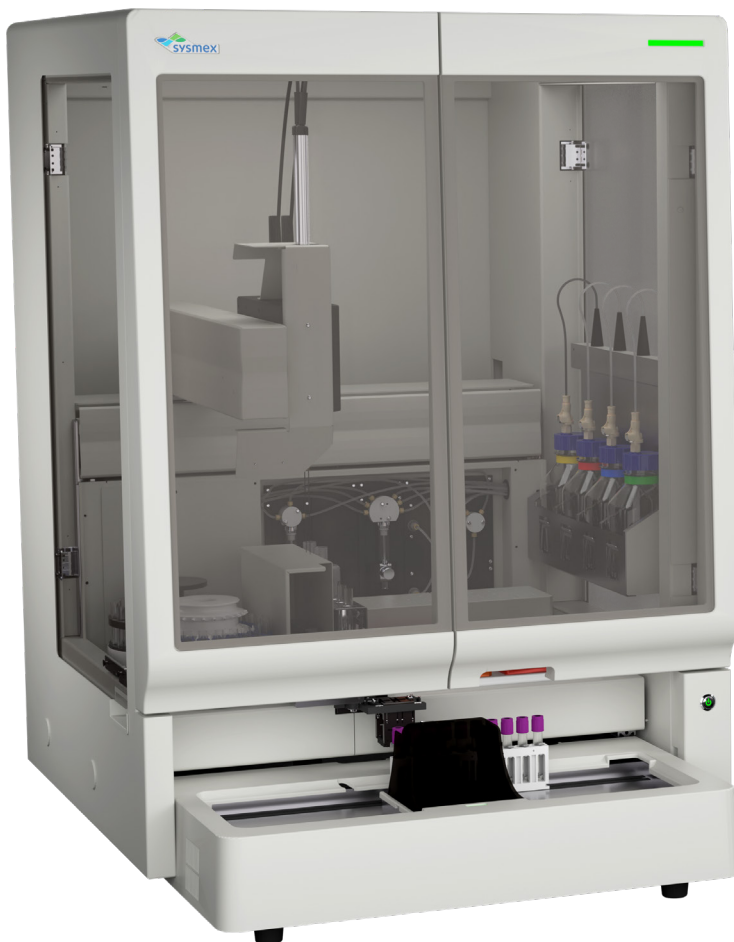
# Ready!

## PS-10 Sample Preparation System

The PS-10 Sample Preparation System alleviates time-consuming manual processes in today's busy clinical flow cytometry laboratory. From automated cocktailing for up to 114 simultaneous on-board antibody vials to antibody tracking with barcoded reagent blocks, the PS-10 provides outstanding flexibility for the creation of custom, complex laboratory tests.

Virtually eliminating operator-dependent variability, the PS-10 instills trust and confidence in data due to excellent post-preparation cell viability, high cell recovery and reproducible results. Variables such as sample volume based on WBC count, antibody volume, incubation time and lyse and buffer volumes are all available for customization. Because of these technical advances, cumbersome predilution of primary specimens isn't needed.

The PS-10 generates easy-to-read reports that keep track of all important information on antibodies (such as clone used), samples and reagents. Additionally, it improves documentation by recording sample ID, WBC count, lot number, expiration date and volume used for each pipetting step.



## Improve laboratory processes

- Standardize complex flow cytometry laboratory processes.
- Automate processing with sample, reagent and antibody traceability.
- Easily incorporate existing laboratory procedures with powerful flexibility.
- Reduce operator error with multiple integrated barcode readers.



*Not all products and applications are available in all markets. Contact your Sysmex Sales Representative for further information.*

## Flow cytometry testing your way

- Color-coded PS-10 reagent blocks accommodate a combination of Sysmex and non-Sysmex vials and can be refrigerated after use.
- Information on reagent blocks, bulk reagents, tests, panels and procedures is stored for future reuse.
- Touchscreen interface provides an easy overview of current inventory and testing progress.

## Design elements that maximize workflow efficiency

- Dual cap-piercing eliminates prep steps and minimizes operator exposure to potentially hazardous biological specimens.
- Automatic allocation of daughter tubes eliminates manual labeling.
- A single aspiration of blood or antibody allows multiple aliquots, saving time for multi-tube panels.

## The new standard for throughput of routine, no-wash assays

- Processes approximately two 24-tube rotors per hour, for no-wash assays.
- Dual rotor configuration enables batch processing.
- Continuous sample processing during incubation and wash steps maximizes efficiency.
- All reagents and waste containers have level monitoring.



*Not all products and applications are available in all markets. Contact your Sysmex Sales Representative for further information.*

# Set!

## Helmer UltraCW II Automatic Cell Washing System

For wash procedures, the PS-10 rotors are directly compatible with the Helmer UltraCW II Automatic Cell Washing System.



- Rotors can be easily transferred on and off the system for required wash steps, virtually eliminating daughter tube handling and human errors when transferring tubes to and from a centrifuge for washing.
- The UltraCW II can store multiple customizable programs for automatic wash cycles, decanting to a cell pellet and resuspension of cells.



*Not all products and applications are available in all markets. Contact your Sysmex Sales Representative for further information.*

# FLOW!

## XF-1600 Flow Cytometer

The XF-1600 integrates a multi-laser optical layout with Sysmex's proven fluidics design for reliable performance. Stable fluidics—even at high sample acquisition rates—ensure the system is capable of rapid data collection and analysis with high sensitivity. The XF-1600 also provides the option of a lower sampling rate for increased measurement precision.



- Flexible specimen handling
- Rare event analysis capability
- Rapid data acquisition without loss of sensitivity
- Intuitive software with automated QC and optional off-line analysis solution
- Top-rated service Sysmex is known for

*Not all products and applications are available in all markets.  
Contact your Sysmex Sales Representative for further information.*

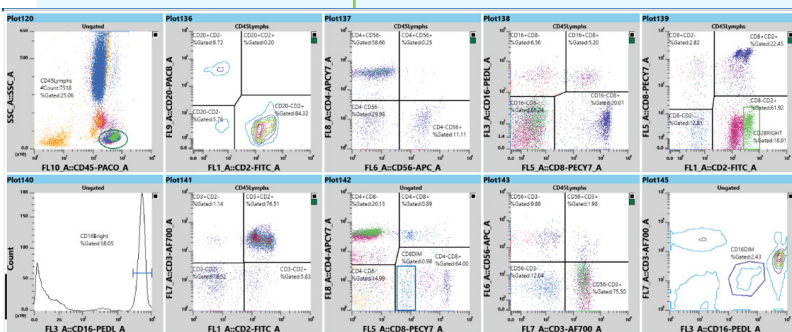
## Powerful Rare Event Mode with excellent data resolution

With the growing interest for rare event analysis, the XF-1600 incorporates a Rare Event Mode (REM) based on established hematology technology. The system allows users a choice of six aspiration volumes which analyze up to 2 mL of specimen for low carryover and Limit of Blank (LoB).

Five adjustable sample rates - from 5  $\mu$ L/min to 120  $\mu$ L/min - provide flexibility for all sample types, titer levels and cell concentrations. At high sheath velocity, fast data acquisition rates – up to 50,000 events per second – reduce the overall sample acquisition time while maintaining the sensitivity required for rare event analysis.

## Intuitive XF-1600 software

Sysmex's intuitive user interface makes the XF-1600 easy to use for all lab staff. Choose from a variety of plot options including linear, log and logicle axis scaling for single or dual parameter plot types with selectable statistics.



## Variety of options for panel customization

- Easy selection and input of channel settings
- 5 different flow rates
- Volume selection of up to 2 mL
- Multiple stop settings based off events or time

## A flexible approach to sample handling

If your valuable specimens require special attention, the XF-1600 provides unique sampling options. Single-tube processing can be performed on a variety of tube sizes with selectable aspiration volumes to ensure minimal sample waste and protection against accidental sample loss. Alternatively, samples can be loaded on a Sysmex-compatible rotor for automated walkaway acquisition.

*Not all products and applications are available in all markets. Contact your Sysmex Sales Representative for further information.*

# High-quality CE-IVD Sysmex reagents

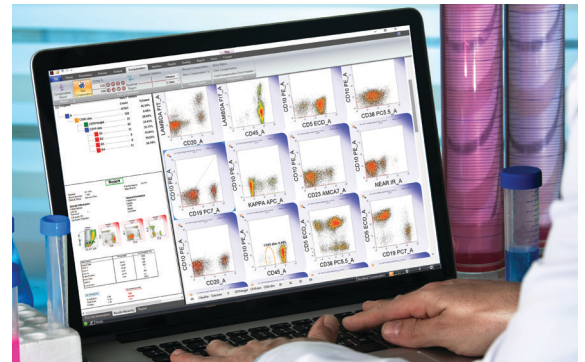
Sysmex's high-quality clinical antibodies offer several advantages including strong and reliable signals, reduced background noise, improved population resolution and potentially decreased need for color compensation. All Sysmex reagents feature a convenient, readable QR code for automatic entry of reagent type, product code, lot number and expiration date.



- Choose from a broad portfolio of clinical CyFlow™ antibody reagents to create the perfect panel
- Robust quality and high stain index
- Core markers for complex flow cytometry applications
- Ever-expanding selection of available analytes
- 1 mL demo vials available upon request

## VenturiOne® software

For research applications, VenturiOne offline analysis software provides high-speed processing of up to 400 data files in a single batch, with unique and robust data previews that make plot creation simple and quick. Autogating, hyperlog sliders and versatile color compensation put powerful analytics in your hands.



## CellTrics™ filters

CellTrics filters are innovative cell strainers with a high flow rate and patented ventilation hole for rapid sample preparation. They are available sterile and non-sterile, fit on tubes of different diameters and are available in seven different color-coded mesh sizes from 5 to 150 micrometer.

*For Research Use Only.*

*Not all products and applications are available in all markets. Contact your Sysmex Sales Representative for further information.*

**Sysmex Corporation**  
1-5-1-Wakino-hama-Kaigandori Chuo-ku, Kobe 651-0073, Japan · Phone +81 78 265-0521 · [www.sysmex.co.jp](http://www.sysmex.co.jp)

**Sysmex Canada, Inc.**  
5700 Explorer Drive Suite 200, Mississauga, ON L4W0C6 Canada · Phone +1 905 366-7900 · [www.sysmex.ca](http://www.sysmex.ca)