



Reshaping compact automation

XN-Series™ Automated Hematology Systems



Small, Smart, Compact Automation—

It's an approach to hematology testing that's never been done before. An approach that gives all laboratories the same exact test menu, including all of Sysmex's advanced parameters, regardless of test volume or laboratory location.

The XN-Series changes the way hematology will be performed in the modern clinical laboratory. Its different configurations offer:

- High-performance design
- Advanced clinical utility
- Standardization
- Optimized efficiency of workflow, staffing and space
- Access to the most advanced technologies, with remarkably smaller footprints
- Productivity and efficiency enhancements that support auto-validation

Advanced Parameters on a Smaller Scale

Regardless of your workload or location, the following advanced parameters are a standard part of the CBC + diff:

- Immature granulocytes (IG) with every differential
- Nucleated RBC with every CBC and Reticulocyte profiles including reticulocyte hemoglobin (RET-H_e) and immature reticulocyte fraction (IRF)
- Immature platelet fraction (IPF) and a fluorescent platelet count (PLT-F) designed for very low platelet counts
- Body fluid analysis that includes a 2-part diff including polymorphonuclear #,% and mononuclear #,%.



Modular design is different now.

The XN-Series' approach to full automation is based on analyzer modules that have broad capabilities that you can combine in many ways to open a world of possibilities.

XN-1000™



The XN-10™ module is the core analytical module for all XN-Series configurations. One analytical module with a sampler comprises the XN-1000 configuration.

XN-2000™



The XN-2000 is a unique co-primary approach that replaces the conventional primary and backup system approach used in the past.

XN-3000™



The XN-3000 configuration enables your laboratory to add a slidemaker/stainer driven by onboard, laboratory-defined rules for automatic reflex testing.

Specifications

XN-1000








XN-2000



XN-3000



Model ID	XN1000-100-BPR	XN2000-200-BPR	XN3000-201-BPR
Components			
Sampler	SA-10	SA-20	SA-30
# XN-10	1	2	2
# XN-20	0	0	0
# SP-10	0	0	1
Body Fluid License (B)	Included	Included	Included
PLT-F License (P)	Included	Included	Included
Reticulocyte License (R)	Included	Included	Included
Reportable parameters by channel	<ul style="list-style-type: none">  WBC, RBC, HCT, HGB, MCV, MCH, MCHC, PLT (PLT-I), NRBC%, NRBC#, RDW-SD, RDW-CV, MPV  NEUT#,%; LYMPH#,%; MONO#,%; EO#,%; BASO#,%; IG#,%  WBC-BF; RBC-BF; MN#,%; PMN#,%; TC-BF# (Body Fluids, B License)  PLT (PLT-F), IPF (Platelets, P License)  RET%, RET#, IRF, RET-He (Reticulocytes, R License) 		
Dimensions	25.4" w x 33.7" h x 29.7" d	37.8" w x 33.7" h x 29.7" d	78" w x 42" h x 35.5" d
Quality control	1) XN Check: Complete tri-level QC product for all CBC, NRBC, Diff, PLT and Reticulocyte parameters 2) XN Check BF: Bi-level QC product for Body Fluid channel including 2-part differential		
Description	Compact automation Increased productivity Onboard decision rules Hands-free reflex/rerun	Compact automation Unique co-primary system Automatic workload balancing Increased productivity Onboard decision rules Hands-free reflex/rerun	Compact automation Unique co-primary system with reflexive slide preparation based on rules Automatic workload balancing Increased productivity Onboard decision rules Hands-free reflex/rerun
Throughput	up to 100 samples/hr	up to 200 samples/hr	up to 200 samples/hr
Ideal testing workload range	50 to 100 samples/day	100 to 1,000 samples/day	200 to 1,000 samples/day
IPU decision rules environment	1) Pre-loaded template within the XN-Series IPU (PC) 2) Customer editable/adjustable 3) Easily enabled/disabled 4) Near paperless environment when using the IPU (print 'positive' only) 5) Exception sample review and release at LIS (once lab sets up LIS to release and hold results according to specific indicators received from XN) 6) IPU rules not in use when Sysmex WAM is selected as an option		
Reagent management	1) RFID (Radio Frequency ID) tags for hands-free information management of cartridge reagents 2) Concentrated reagent option to minimize reagent changes and handling and improve inventory management 3) Floor-standing wagon option for reagent storage, management and increased convenience		
Standard	Description	Description	Description
Network printer	Yes	Yes	Yes
XN IPU	Mounted on right side if optional Wagon Kit purchased		
Interfaces	ASTM Sysmex WAM (HL7 and ASTM)		

Options

XN-1000

XN-2000

XN-3000



Options	Description	Description	Description
Wagon kits Provides floor-standing platform and reagent management. Supplied with monitor arm and keyboard/mouse platform	XN-1000 Wagon Kit XN1000-WGSET (XN-1000 sold separately) 25.75" w x 28" h x 38" d	XN-2000 Wagon Kit XN2000-WGSET (XN-2000 sold separately) 41.5" w x 28" h x 38" d	XN-3000 Wagon Kit XN3000-WGSET (XN-3000 sold separately) 78.5" w x 28" h x 45.5" d

Systemx WAM™



Decision support software for the clinical laboratory
Scalable Informatics and Work Area Management platform delivering enhanced sample and data processing management

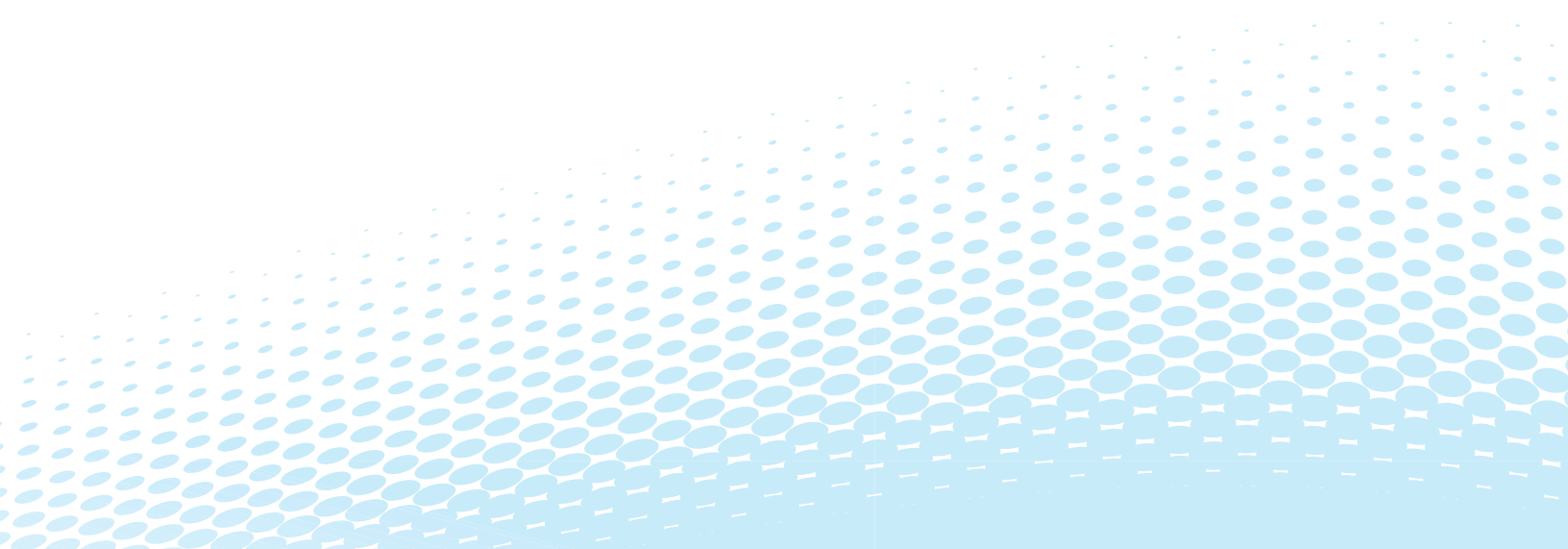
- 1) Comprehensive hematology information management system with auto-validation
- 2) Single interface to LIS
- 3) Complex rules engine; demographic, location, physician, patient-specific, specimen age and extended delta-checking
- 4) Multi-site, multi-LIS data process integration
- 5) Paperless environment
- 6) Management Reports Module

Concentrated reagent/diluter (RU-20)



Reduce the frequency of reagent replacement by using the RU-20 and CELLPACK® DST. One CELLPACK DST does the work of 25 CELLPACK® DCLs.

RU-20 (Reagent unit)—dilutes concentrated diluent (CELLPACK DST) to create ready-to-use CELLPACK DCL
Recommended minimum workload is 55 samples per day when using the 2 x 4L packaging, 200+ samples per day when using the 20L packaging





Sysmex Corporation
1-5-1-Wakinohama-Kaigandori
Chuo-ku, Kobe 651-0073, Japan
Tel. +81 (78) 265-0521
www.sysmex.co.jp

Sysmex America, Inc.
577 Aptakisic Road
Lincolnshire, IL 60069, U.S.A.
Tel. +1 (800) 379-7639
www.sysmex.com/us

Sysmex Canada, Inc.
5700 Explorer Drive
Suite 200,
Mississauga, ON L4W0C6
Canada
Tel. +1 (905) 366-7900
www.sysmex.ca

*Sysmex Latin America and
the Caribbean*
Rua Joaquim Nabuco 615 -
Bairro Cidade Jardim
São José dos Pinhais
Paraná – Brasil – CEP 83040-210
Tel. +55 (41) 2104-1314
www.sysmex.com.br

