

BeyondCareSM Quality Monitor for Hematology

You run QC. Sysmex
does the rest.





Innovative, effortless QC monitoring from a name you can trust – Sysmex.

Analyzer wellness from the inside out

Sysmex QC material works seamlessly with BCQM advanced algorithms to verify calibration every day, eliminating scheduled calibrations. Early error detection and guided troubleshooting makes it simple and easy to keep your analyzer running optimally.

Features:

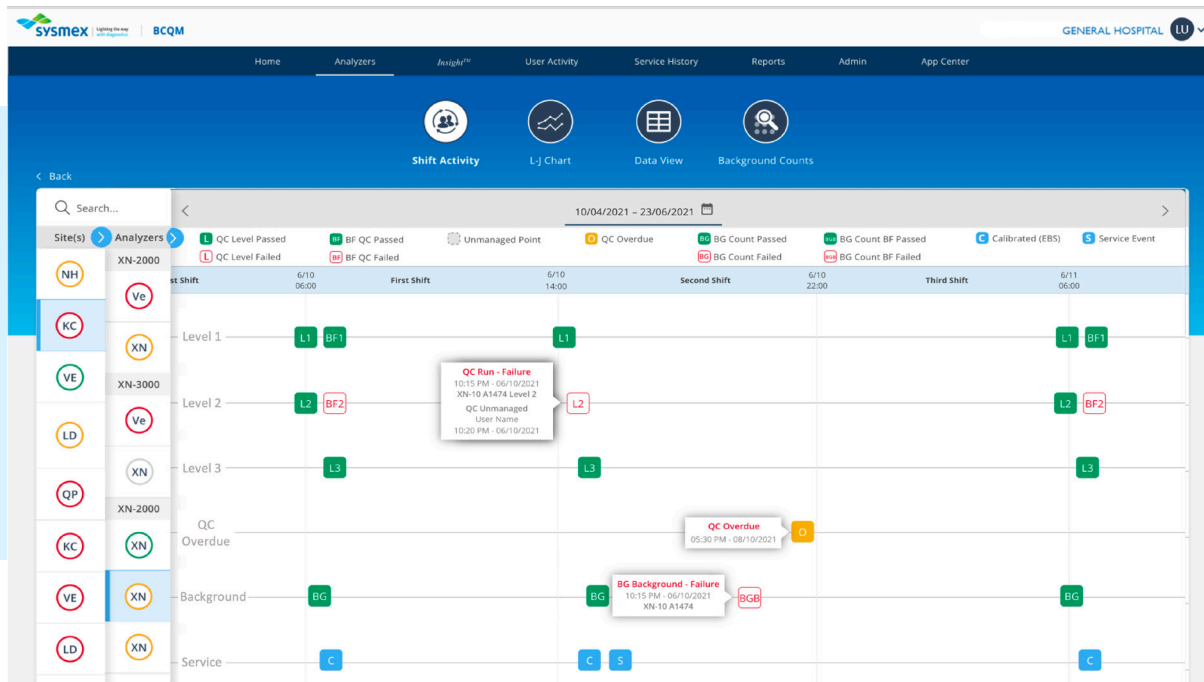
- Interactive dashboard elements at a glance
- **Insight™** integration
- Calibration verification during each daily QC to ensure confidence in patients results
- Dynamic L-J charts to provide real-time peer group and multi-instrument comparison

Services:

- Step-by-step standardized troubleshooting helps lab staff resolve and document QC issues
- Automatically notifies the Sysmex Technical Assistance Center when complex issues require a service visit
- Continuous calibration verification eliminates periodic downtime for routine calibration procedures

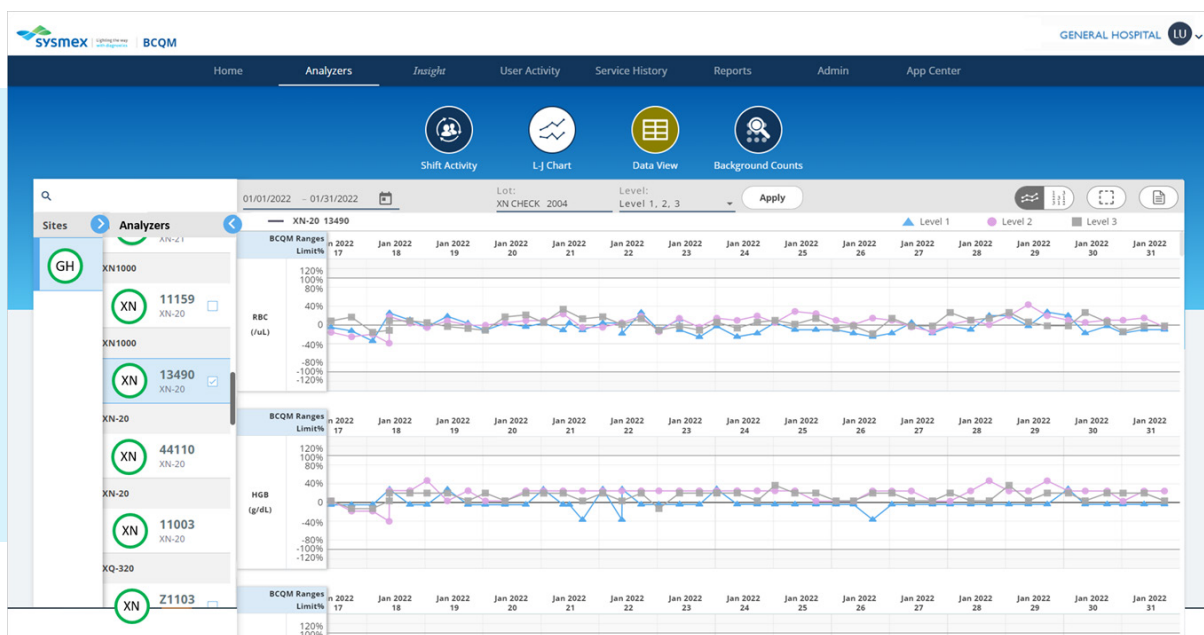
Shift Activity

The shift activity provides details of all activities to create a seamless hand-off between work shifts. Instantly know when, who and what happened with easy to read timeline icons. Clicking on any icon takes you to more details about that activity, creating an easy to follow investigation.



Plot View

Each plot represents the QC data run at a specific time and date. The dynamic targets eliminate material drifting by incorporating Big Data techniques.



BeyondCare Quality Monitor for Hematology (BCQM)

Simple, guided resolution of quality control issues

- Simplify and standardize QC interpretation
- Capable of managing QC data
- Streamline QC troubleshooting with consistent, guided step-by-step corrective action
- Minimize analyzer downtime to maximize workflow efficiency

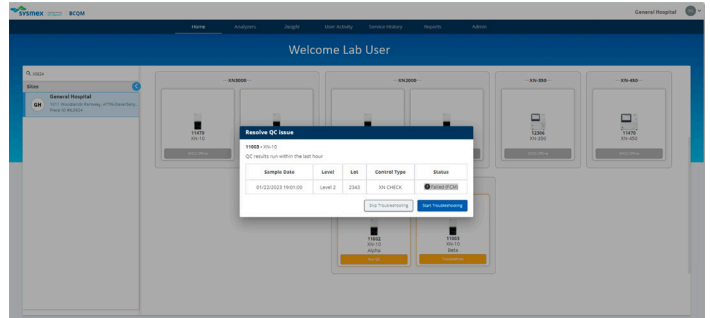
Confidence in the quality of results

- Calibration is verified using advanced algorithms and reassured by running a CCV(continuous calibration verification) report.
- Assess analyzer performance through real-time peer group evaluation
- Monitor performance issues earlier than traditional QC methods
- Set QC reminders and alerts to align with your lab's specific QC policies

Simplify regulatory readiness

- Align with major regulatory agency requirements
- XN-L and XN CHECK™ quality control material is acceptable for use in calibration verification and is traceable to international reference methods
- Access *Insight* and calibration reports quickly during inspections even for multiple sites

Access *Insight*, calibration and calibration verification reports at www.systemx.com/bcqm



Guided Troubleshooting

Analyzer	Level 1	Level 1	Level 1	Level 1	Level 1	Level 1	Level 1
IGV (10 ⁹ /µL)	0.29	0.28	0.29	0.29	0.31	0.31	0.29
IGV (%)	10.2	9.6	9.9	10.2	10.7	10.2	10.3
WNR-X (ch)	215.7	215.8	212.9	214.1	213.3	210.1	209.4
WNR-Y (ch)	180.8	181.0	181.2	181.0	180.8	179.7	181.1
RET# (10 ⁹ /µL)	0.092	0.0932	0.087	0.0881	0.09	0.0883	0.0894
RET# (%)	4.07	4.07	3.8	3.83	4.0	3.89	3.92
HFR (%)	12.6	13.3	15.1	14.9	12.3	14.9	15.0
MFR (%)	47.4	44.8	48.4	43.2	44.7	46.1	45.6
LFR (%)	40.0	41.9	38.5	41.9	43.0	39.0	39.4

Managing QC outliers

Parameter	Level	Test Result	Target	Lower Limit	Upper Limit	CV	CV Limits
RBC	L1	2.343	2.320	2.227	2.414	P 9	2.0
	L2	4.417	4.394	4.252	4.536	P 7	1.6
	L3	5.348	5.320	5.147	5.493	P 7	1.6
HGB	L1	5.87	5.84	5.61	6.08	P 1.1	2.0
	L2	12.31	12.27	11.91	12.63	P 8	1.5
	L3	16.70	16.58	16.11	17.06	P 5	1.4
HCT	L1	17.98	17.44	16.39	18.50	P 1.5	3.0
	L2	37.42	36.43	34.53	38.32	P 1.0	2.6
	L3	48.38	46.07	42.73	50.41	P 1.2	2.4
MCV	L1	76.74	75.17	72.01	78.32	P 1.0	2.1
	L2	84.73	82.90	79.93	86.16	P 9	2.0
	L3	92.33	90.36	87.07	93.65	P 9	1.8
MCH	L1	25.05	25.17	24.15	26.19	P 1.0	2.0
	L2	27.88	27.93	26.96	28.90	P 8	1.7
	L3	31.23	31.18	30.11	32.24	P 7	1.7

Calibration verification certificate

Systemx Corporation
1-5-1-Wakinohama-Kaigandori Chuo-ku, Kobe 651-0073, Japan · Phone +81 78 265-0521 · www.systemx.co.jp

Systemx America, Inc.
577 Aptakisic Road, Lincolnshire, IL 60069, U.S.A. · Phone +1 800 379-7639 · www.systemx.com/us

Systemx Canada, Inc.
5700 Explorer Drive Suite 200, Mississauga, ON L4W0C6 Canada · Phone +1 905 366-7900 · www.systemx.ca

Systemx Latin America and the Caribbean
Rua Joaquim Nabuco 615 - Bairro Cidade Jardim, São José dos Pinhais Paraná - Brasil - CEP 83040-210 · Phone +55 41 2104-1314 · www.systemx.com.br