

BEYONDCARESM QUALITY MONITOR FOR URINALYSIS



Quality Control
Simplified

Analyzer wellness from the inside out

BeyondCare Quality Monitor for Urinalysis (BCQM[®]) is an automated quality control management program that reduces analyzer downtime by providing the laboratory with proactive monitoring and immediate identification of potential errors. Partnering your laboratory with Sysmex innovation, quality assurance becomes transformed to provide simplified and consolidated QC procedures. The first urinalysis quality control system of its kind, BCQM[®] streamlines the end-to-end process of running controls and reviewing results while taking the guesswork out of quality control management.

Features:

- Customizable shift activity and QC statistical reports
- Notifications when QC needs to be performed or QC data exceeds limits
- Intuitive QC chart display with detailed results and interactive graphs

Benefits:

- Automates your urinalysis quality control management
- Enhances operator troubleshooting
- Detects shifts and trends for reliable error detection
- Simplifies regulatory compliance

Easily view Quality Control activity on each analyzer

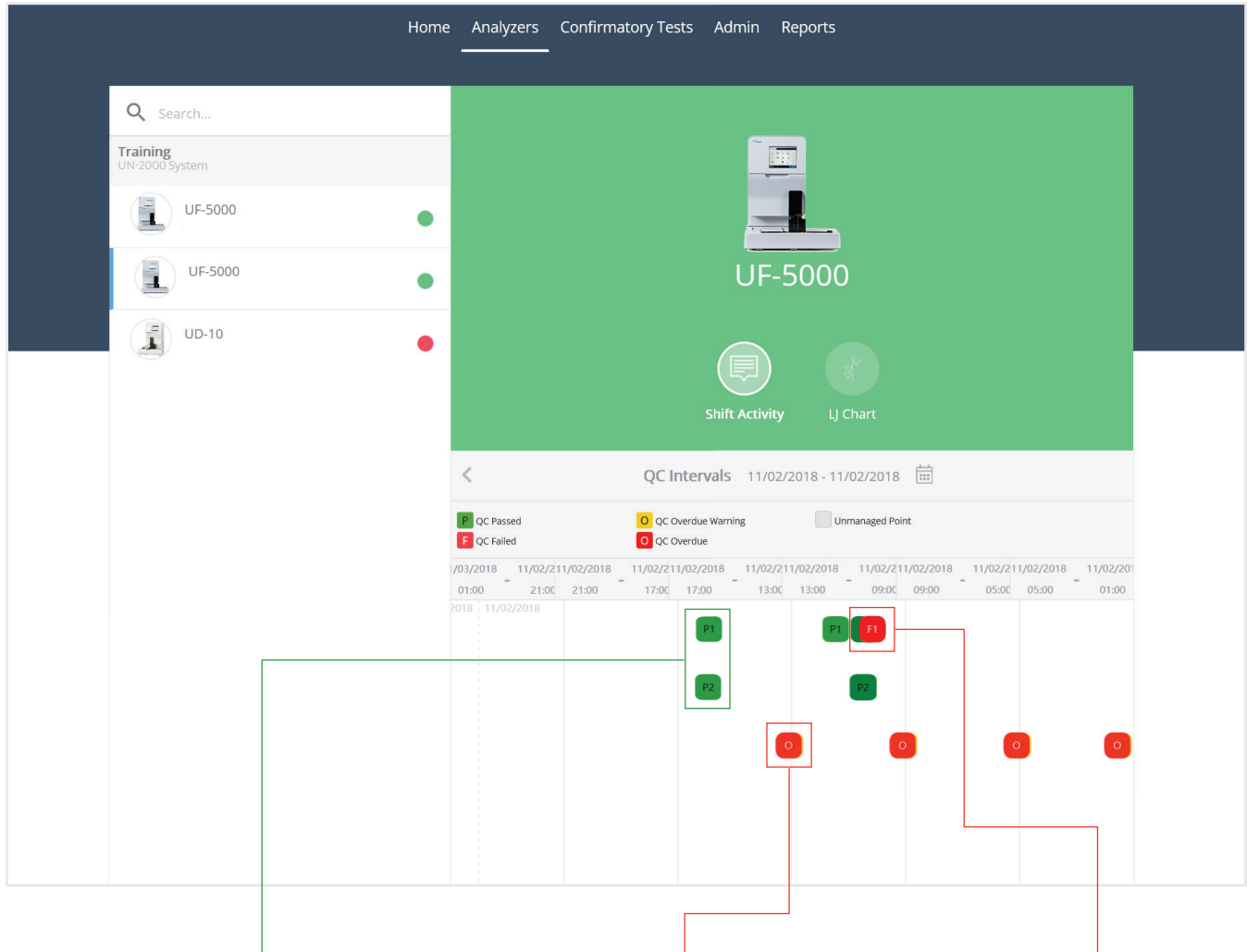
Shift activity screen shows:

- Large display of selected analyzer's quality status
- Time and date of QC runs for all analyzers in the system
- Color-coded icons for easy QC interpretation



Color-coded alerts for intuitive quality control interpretation

Innovative, effortless QC monitoring for simplified quality management



LEVELS I AND II OF QC PASSED

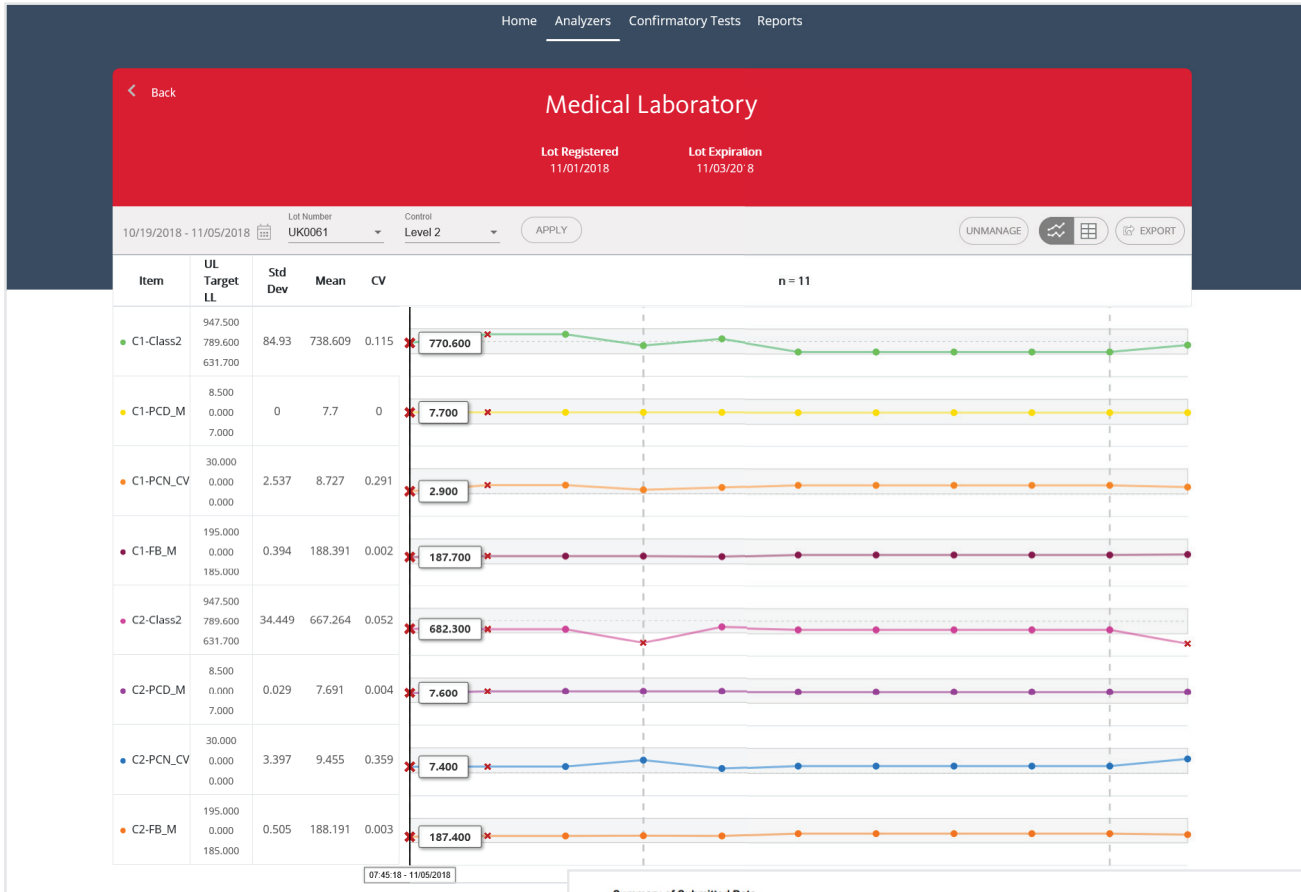
QC status is automatically recorded in the Shift Activity screen for each analyzer

QC IS OVERDUE

QC frequency can be setup in the Admin area of the BCQM^U program

LEVEL I QC FAILED

QC data can be managed and documented within the BCQM^U software



LJ Chart Display

Summary of Submitted Data

Report Type: LJ Chart Report

Selected Date Range: 02/18/2019 - 02/21/2019

Analyzer type	Lot Number	QC Level	Parameters	
UF-5000	YS8015	Level 1	RBC	CW_FSC_P
		Level 2	WBC	CW_FLH_P
			EC	CW_SSH_P
			CAST	CW_SSL_P
			BACT	CW_DSS_P
			Cond.	CB_FSC_P
			SF_FSC_P	CB_FLL_P
			SF_FSC_W	CB_SSH_P
			SF_FLH_P	
			SF_SSL_P	
			SF_DSS_P	

Prepared By: _____ Date: _____ Time: _____

Reviewed By: _____ Date: _____ Time: _____

Summary Report View

Flexible QC viewing and reporting simplifies documentation

- Multiple report types and graphical displays allow easier data visualization
- Levey-Jennings chart filters allow user to select date range, lot number, and control level
- Can export charts and reports in pdf format

Find out more at www.sysmex.com/bcqm

Sysmex Corporation

1-5-1-Wakinohama-Kaigandori Chuo-ku, Kobe 651-0073, Japan · Phone +81 78 265-0521 · www.sysmex.co.jp

Sysmex America, Inc.

577 Aptakisic Road, Lincolnshire, IL 60069, U.S.A. · Phone +1 800 379-7639 · www.sysmex.com/us

Sysmex Canada, Inc.

5700 Explorer Drive Suite 200, Mississauga, ON L4W0C6 Canada · Phone +1 905 366-7900 · www.sysmex.ca

Sysmex Latin America and the Caribbean

Rua Joaquim Nabuco 615 - Bairro Cidade Jardim, São José dos Pinhais Paraná - Brasil - CEP 83040-210 · Phone +55 41 2104-1314 · www.sysmex.com.br